



Cas-Cad-Nac Farm, LLC
 490 Wheeler Camp Rd
 Perkinsville VT 05151
 802-263-5740

Customer
 Cas-Cad-Nac Farm, LLC
 490 Wheeler Camp Rd
 Perkinsville VT 05151
 802-263-5740

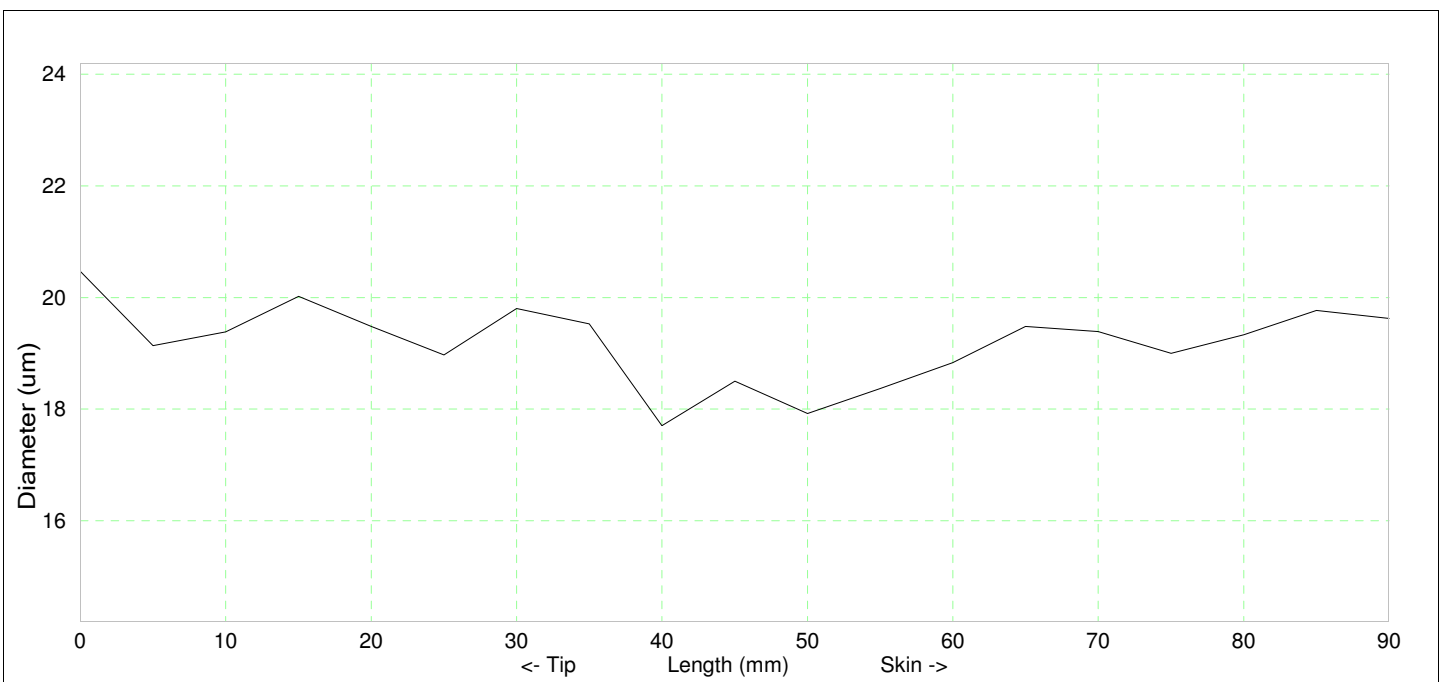
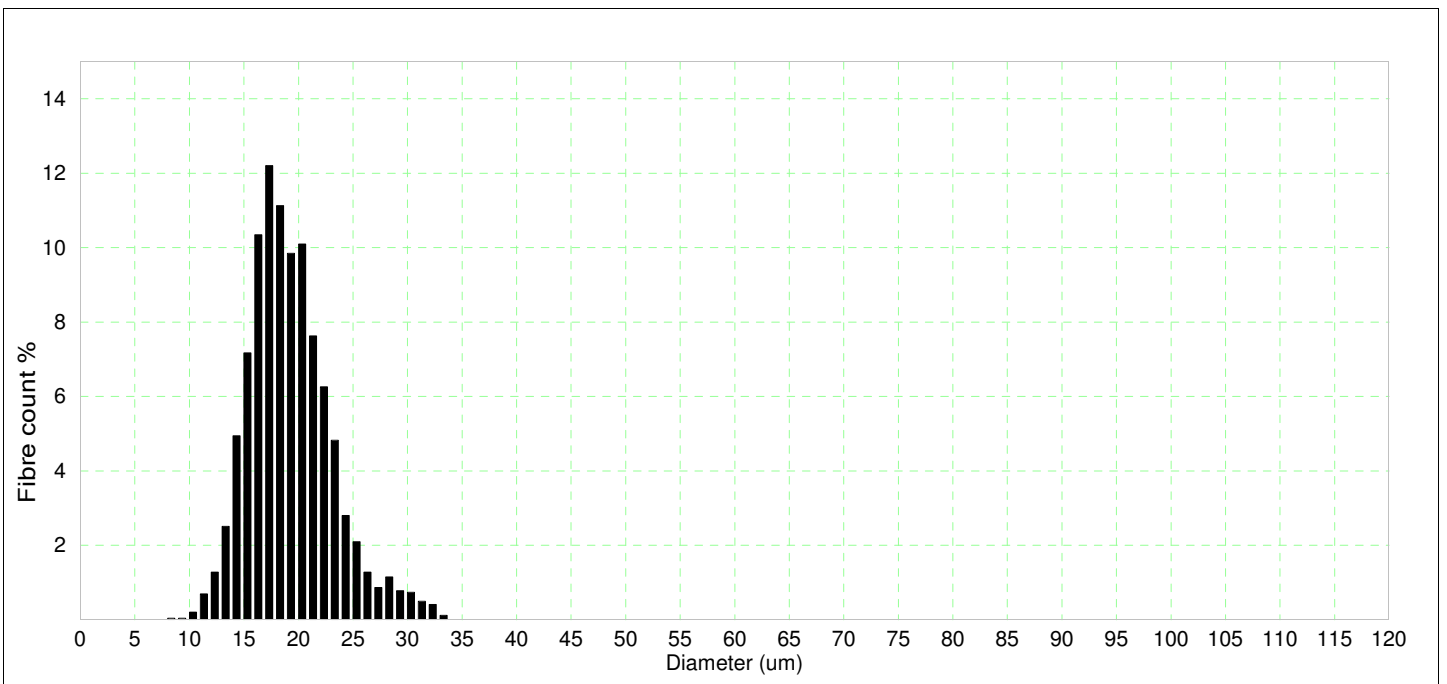
OFDA Test Report

OFDA2186 v5.370 (Cal:4.9495W-2.19), Measured: 19May23, File: CCNF 2023 midside

Name : CCNF Lilibet
 Description : ARI#36004461
 Operator : JCL
 Lot/client : Cas-Cad-Nac Farm, LLC
 Breed : Huacaya
 Sex : f
 Colour : BG
 Date sampled : 4/16/23
 Location : midside
 Age (months) : 21

Diameter : 18.9 μ m
 SD : 3.8 μ m
 CV : 20.3 %
 CE : 7.7 μ m
 Comfort : 99.0 %
 %<15 μ m : 9.7 %
 Spin fineness : 18.3
 Curve : 51.4 deg/mm
 Curve SD : 37.4 deg/mm
 Num fibres : 2426

Staple length : 95.0 mm
 Finest from tip : 40.0 mm
 Mean diam ends : 20.0 μ m
 Skin diam : 19.6 μ m
 Min diam : 17.7 μ m
 Max diam : 20.5 μ m
 SD Along : 0.8 μ m
 SD Across : 4.7 μ m

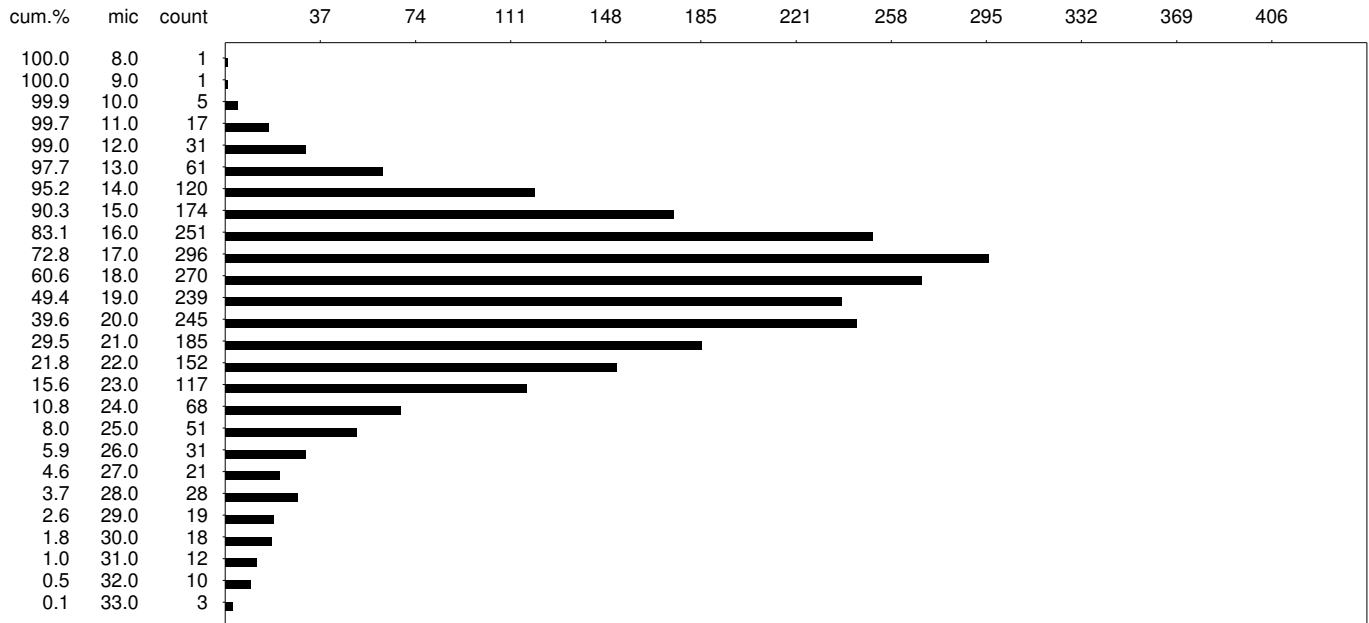


CCNF Lilibet : Diameter Histogram

Date : 19May23
 Sample ID : CCNF Lilibet
 Description : [i][f][b]Huacaya[cBG][a21[d4/16/23]ARI#36004461
 Lot/Client : Cas-Cad-Nac Farm, LLC
 Operator : JCL

Diam = 18.9[3.8] um
 CV = 20.3 %
 CEM = 7.7 um
 CF = 99.0 %
 Spin fineness = 18.32
 Sample size = 2426
 Curve = 51.4[37.4] deg/mm

OFDA2186:5.370 Cal: D = 4.9495*WH -2.19
 Filename: CCNF 2023 midside

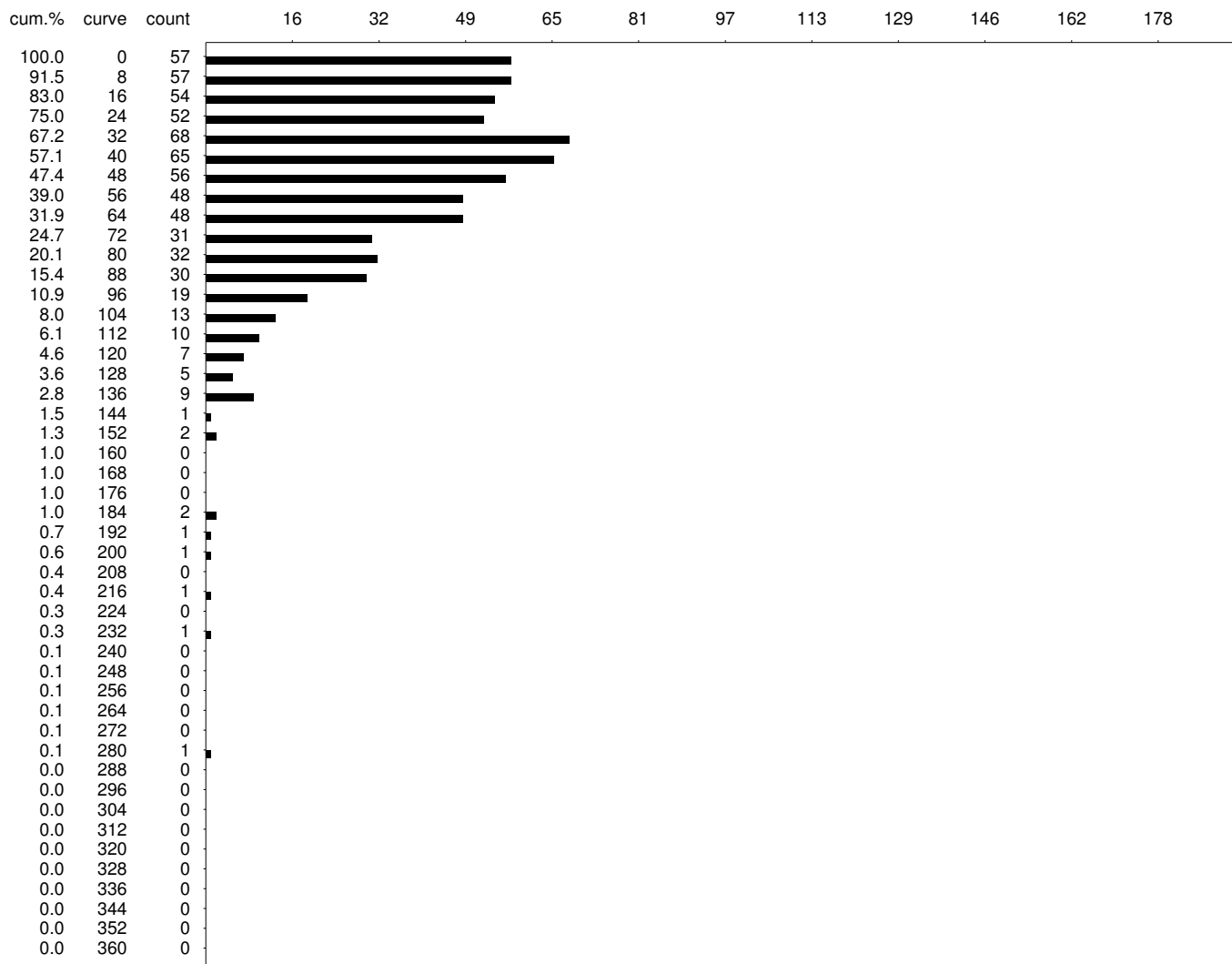


CCNF Lilibet : Curve Histogram

Date : 19May23
 Sample ID : CCNF Lilibet
 Description : [i][f][b]Huacaya[cBG][a21[d4/16/23]ARI#36004461
 Lot/Client : Cas-Cad-Nac Farm, LLC
 Operator : JCL

Diam = 18.9[3.8] um
 Curve = 51.4[37.4] deg/mm
 Sample size = 2426
 Curve size = 671

OFDA2186:5.370 Cal: D = 4.9495*WH -2.19
 Filename: CCNF 2023 midside



CCNF Lilibet : Staple Graph

Date : 19May23
Sample ID : CCNF Lilibet
Description : [i][f][b]Huacaya[cBG][a21[d4/16/23]ARI#36004461
Lot/Client : Cas-Cad-Nac Farm, LLC
Operator : JCL

Diam = 18.9[3.8] μm
Min Diam = 17.7 μm
Max Diam = 20.5 μm
SD Along = 0.8 μm
Length (mm) = 95.0 mm
Break Point = 40.0 mm

OFDA2186:5.370 Cal: D = 4.9495*WH -2.19
Filename: CCNF 2023 midside

