



Cas-Cad-Nac Farm, LLC
490 Wheeler Camp Rd
Perkinsville VT 05151
802-263-5740

Customer
Cas-Cad-Nac Farm, LLC
490 Wheeler Camp Rd
Perkinsville VT 05151
802-263-5740

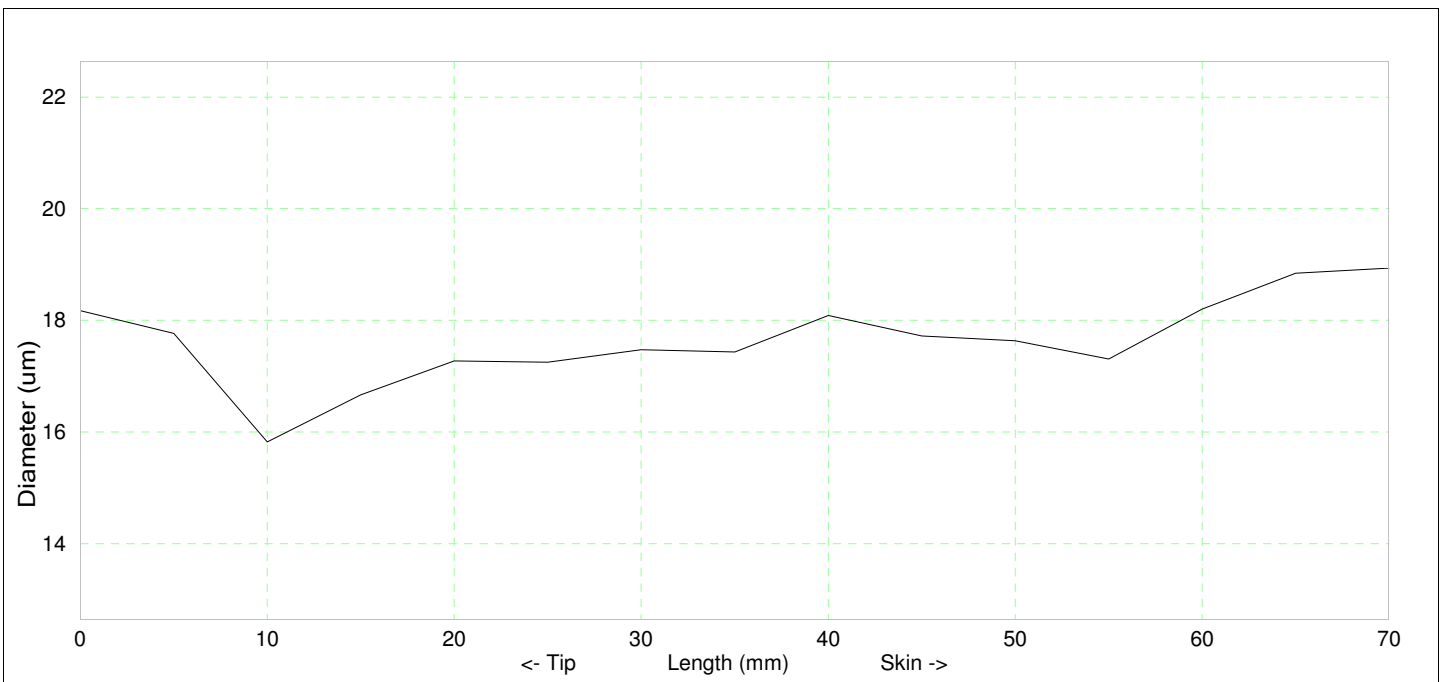
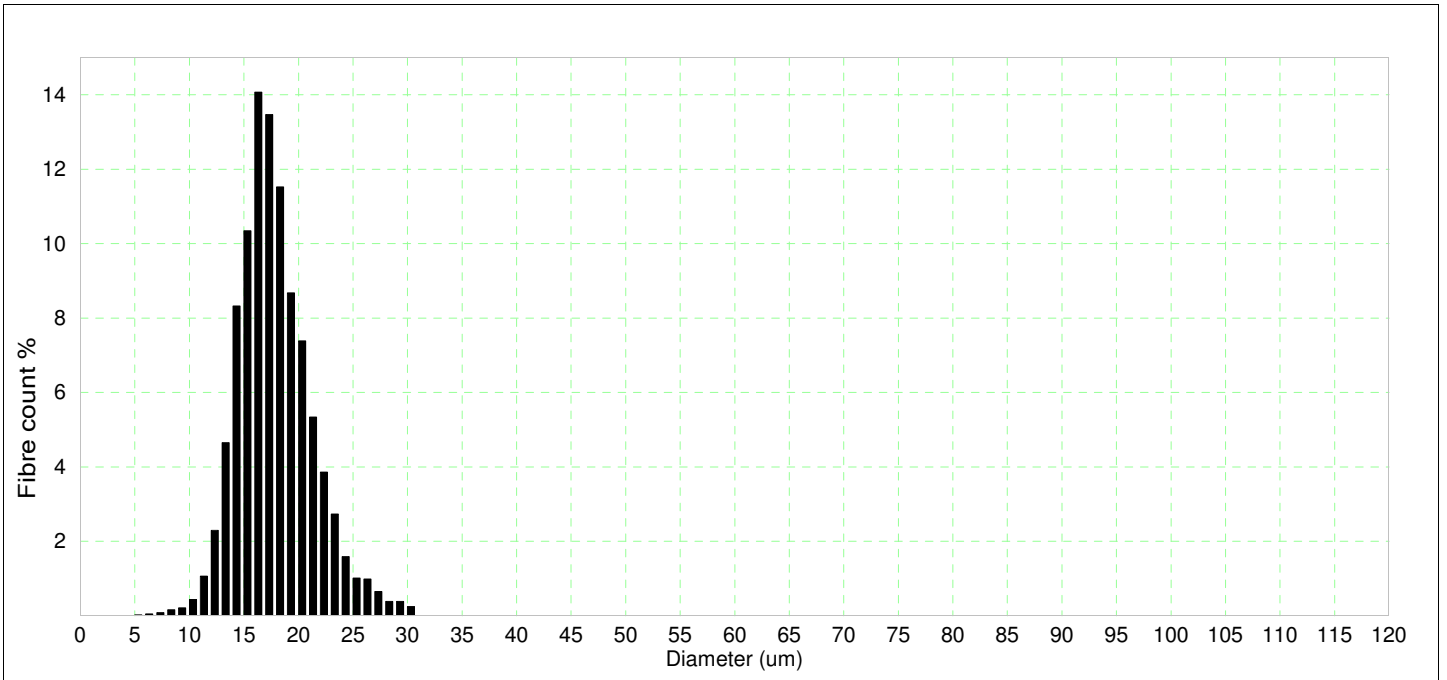
OFDA Test Report

OFDA2186 v5.370 (Cal:4.9495W-2.19), Measured: 29Feb24, File: 2024 CCNF midside

Name : CCNF Ingnuitive
Description : AOA#36239894
Operator : JCL
Lot/client : Cas-Cad-Nac Farm, LLC
Breed : H
Sex : f
Colour :
Date sampled : 2/29/24
Location : midside
Age (months) : 8

Diameter : 17.5 μ m
SD : 3.4 μ m
CV : 19.5 %
CE : 6.7 μ m
Comfort : 100.0 %
%<15 μ m : 17.3 %
Spin fineness : 16.8 μ m
Curve : 48.4 deg/mm
Curve SD : 35.0 deg/mm
Num fibres : 3653

Staple length : 75.0 mm
Finest from tip : 10.0 mm
Mean diam ends : 18.6 μ m
Skin diam : 18.9 μ m
Min diam : 15.8 μ m
Max diam : 18.9 μ m
SD Along : 0.8 μ m
SD Across : 3.9 μ m

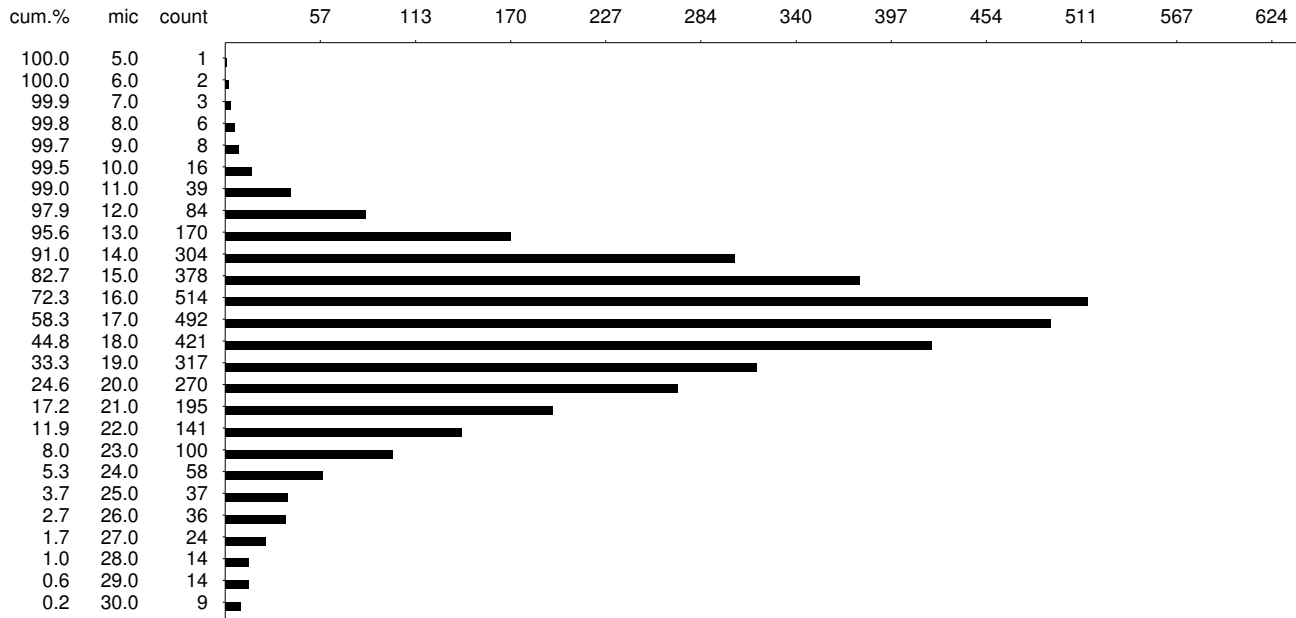


Cas-Cad-Nac Farm, LLC : Diameter Histogram

Date : 29Feb24
 Sample ID : CCNF Ingnuitive
 Description : [[ff[bH][white][a8][d2/29/24]AOA#36239894
 Lot/Client : Cas-Cad-Nac Farm, LLC
 Operator : JCL

Diam = 17.5[3.4] um
 CV = 19.5 %
 CEM = 6.7 um
 CF = 100.0 %
 Spin fineness = 16.83
 Sample size = 3653
 Curve = 48.4[35.0] deg/mm

OFDA2186:5.370 Cal: D = 4.9495*WH -2.19
 Filename: 2024 CCNF midside

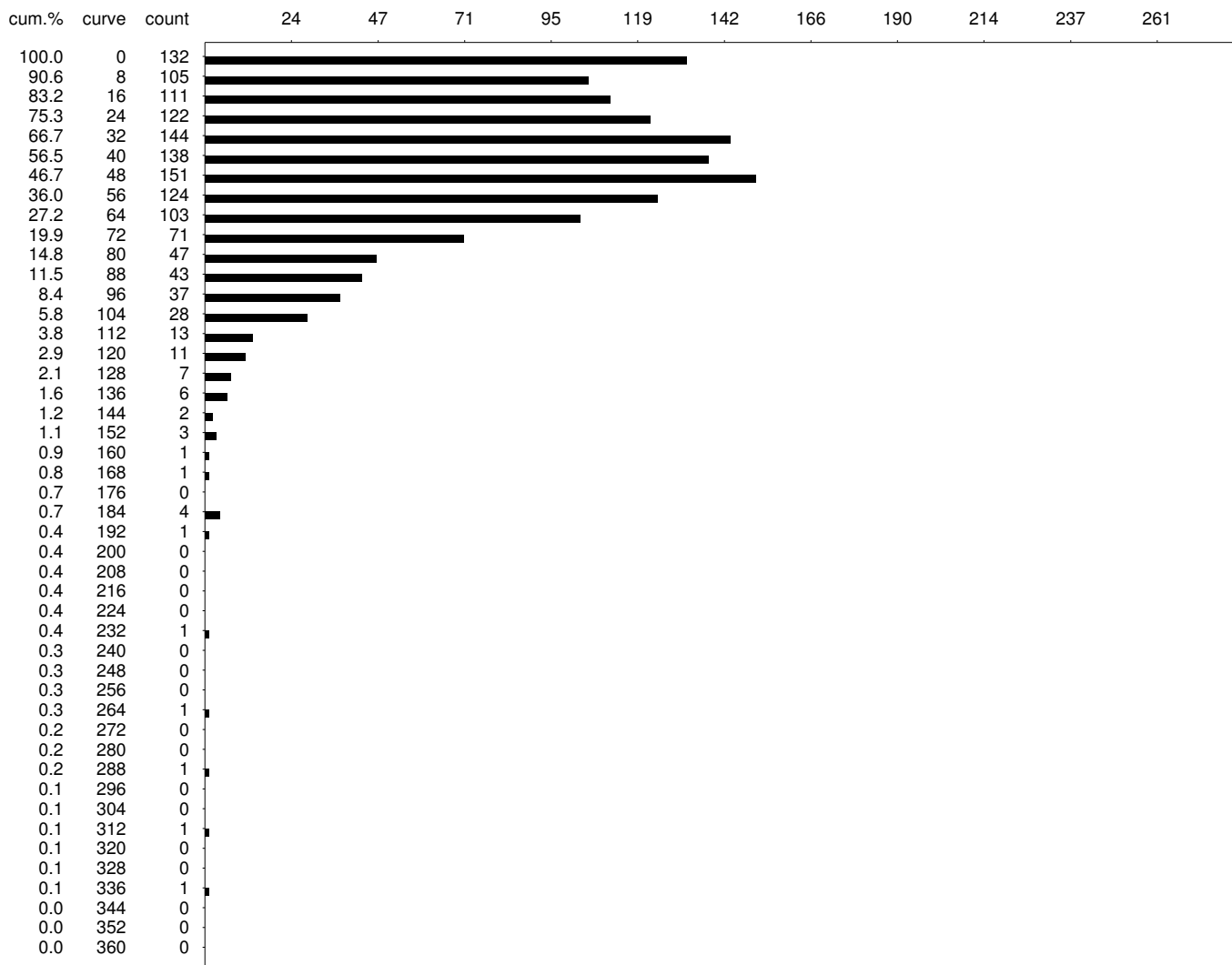


Cas-Cad-Nac Farm, LLC : Curve Histogram

Date : 29Feb24
 Sample ID : CCNF Inguinutive
 Description : [[ff[bH][white][a8][d2/29/24]AOA#36239894
 Lot/Client : Cas-Cad-Nac Farm, LLC
 Operator : JCL

Diam = 17.5[3.4] um
 Curve = 48.4[35.0] deg/mm
 Sample size = 3653
 Curve size = 1410

OFDA2186:5.370 Cal: D = 4.9495*WH -2.19
 Filename: 2024 CCNF midside



Cas-Cad-Nac Farm, LLC : Staple Graph

Date : 29Feb24
Sample ID : CCNF Inginuitive
Description : [[ff[bH][white][a8][d2/29/24]AOA#36239894
Lot/Client : Cas-Cad-Nac Farm, LLC
Operator : JCL

Diam = 17.5[3.4] um
Min Diam = 15.8 um
Max Diam = 18.9 um
SD Along = 0.8 um
Length (mm) = 75.0 mm
Break Point = 10.0 mm

OFDA2186:5.370 Cal: D = 4.9495*WH -2.19
Filename: 2024 CCNF midside

