



Cas-Cad-Nac Farm, LLC
490 Wheeler Camp Rd
Perkinsville VT 05151
802-263-5740

Customer
Cas-Cad-Nac Farm, LLC
490 Wheeler Camp Rd
Perkinsville VT 05151
802-263-5740

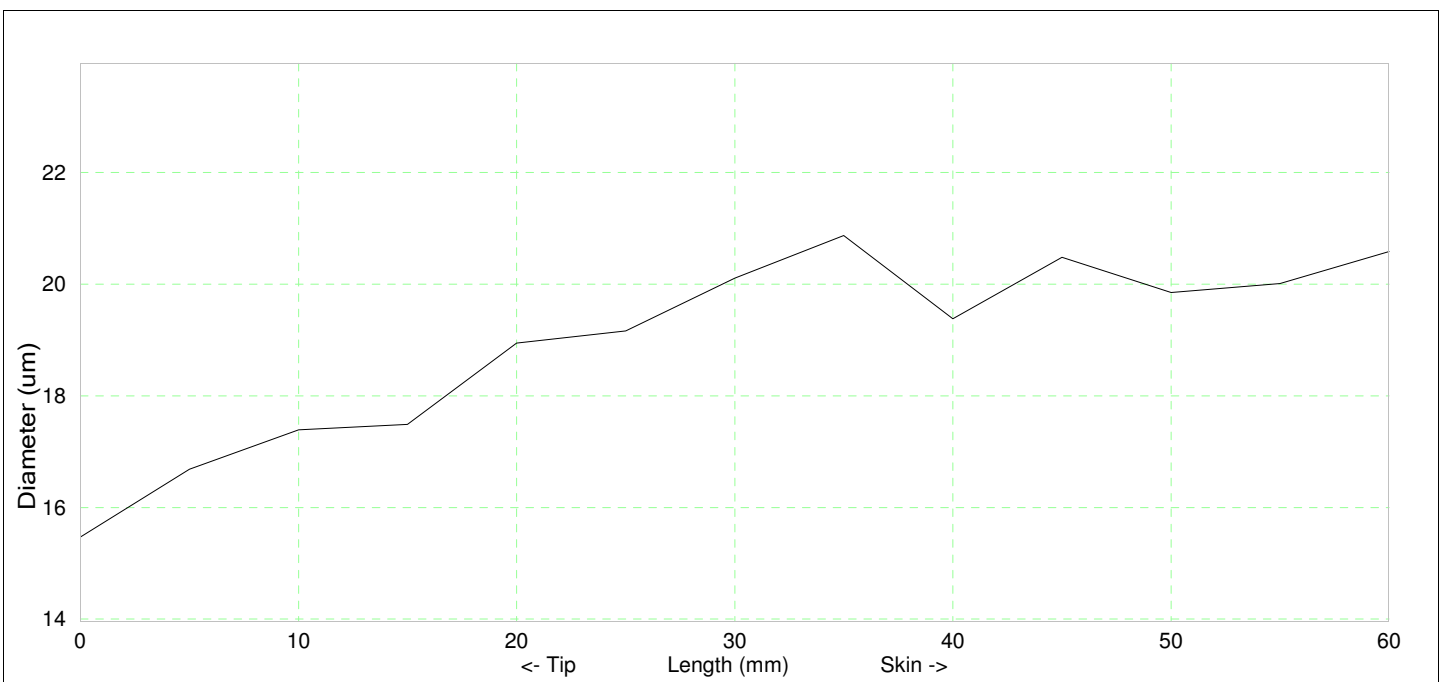
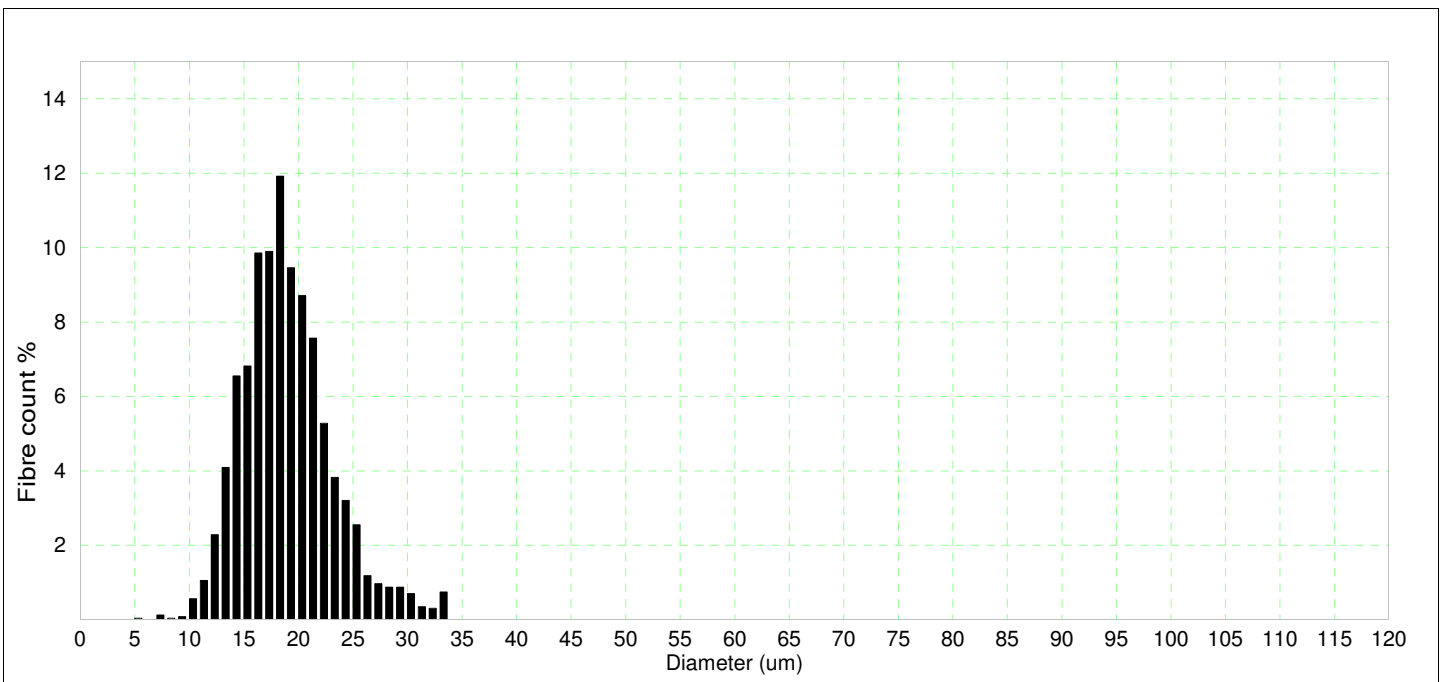
OFDA Test Report

OFDA2186 v5.370 (Cal:4.9495W-2.19), Measured: 29Feb24, File: 2024 CCNF midside

Name : CCNF Alarra
Description : AOA#36238286
Operator : JCL
Lot/client : Cas-Cad-Nac Farm, LLC
Breed : H
Sex : f
Colour :
Date sampled : 2/29/24
Location : midside
Age (months) : 8

Diameter : 18.7 μ m
SD : 4.2 μ m
CV : 22.4 %
CE : 8.2 μ m
Comfort : 98.6 %
%<15 μ m : 14.9 %
Spin fineness : 18.4 μ m
Curve : 51.9 deg/mm
Curve SD : 38.6 deg/mm
Num fibres : 2273

Staple length : 65.0 mm
Finest from tip : 0.0 mm
Mean diam ends : 18.0 μ m
Skin diam : 20.6 μ m
Min diam : 15.5 μ m
Max diam : 20.9 μ m
SD Along : 1.6 μ m
SD Across : 4.7 μ m

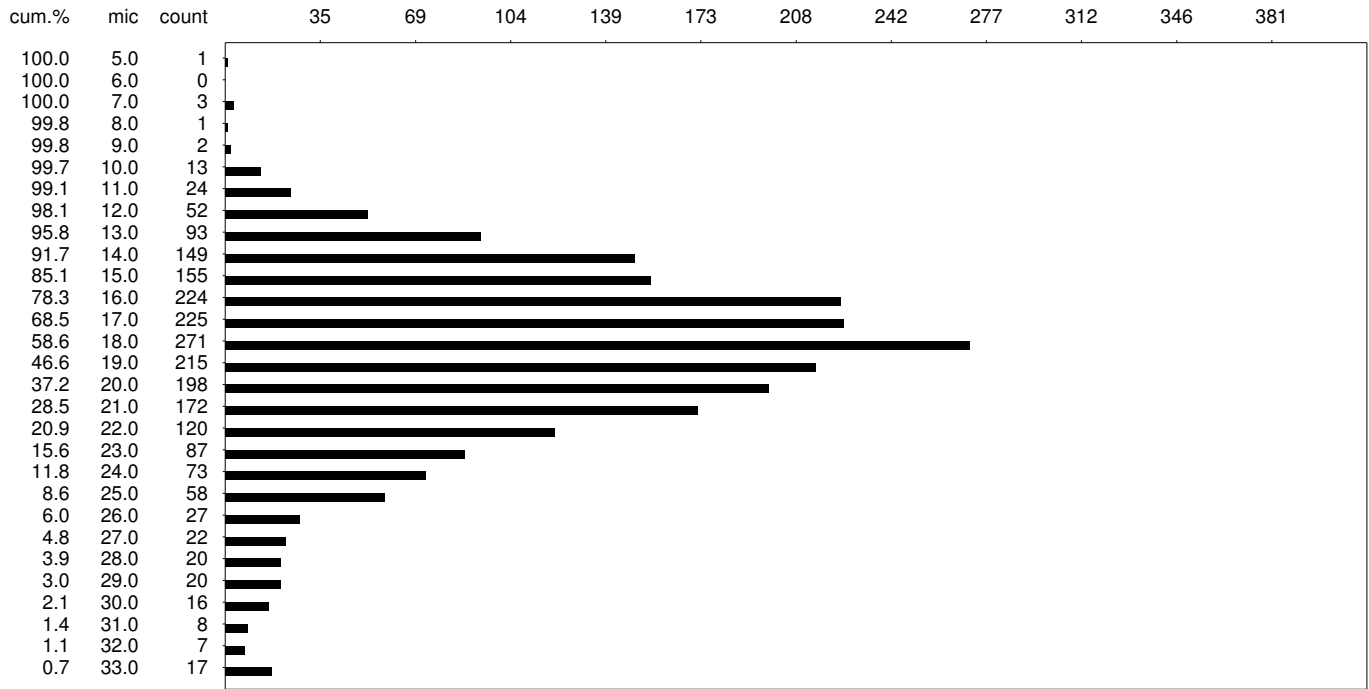


Cas-Cad-Nac Farm, LLC : Diameter Histogram

Date : 29Feb24
 Sample ID : CCNF Alarra
 Description : [[ff[bH][LB][a8][d2/29/24]AOA#36238286
 Lot/Client : Cas-Cad-Nac Farm, LLC
 Operator : JCL

Diam = 18.7[4.2] um
 CV = 22.4 %
 CEM = 8.2 um
 CF = 98.6 %
 Spin fineness = 18.39
 Sample size = 2273
 Curve = 51.9[38.6] deg/mm

OFDA2186:5.370 Cal: D = 4.9495*WH -2.19
 Filename: 2024 CCNF midside

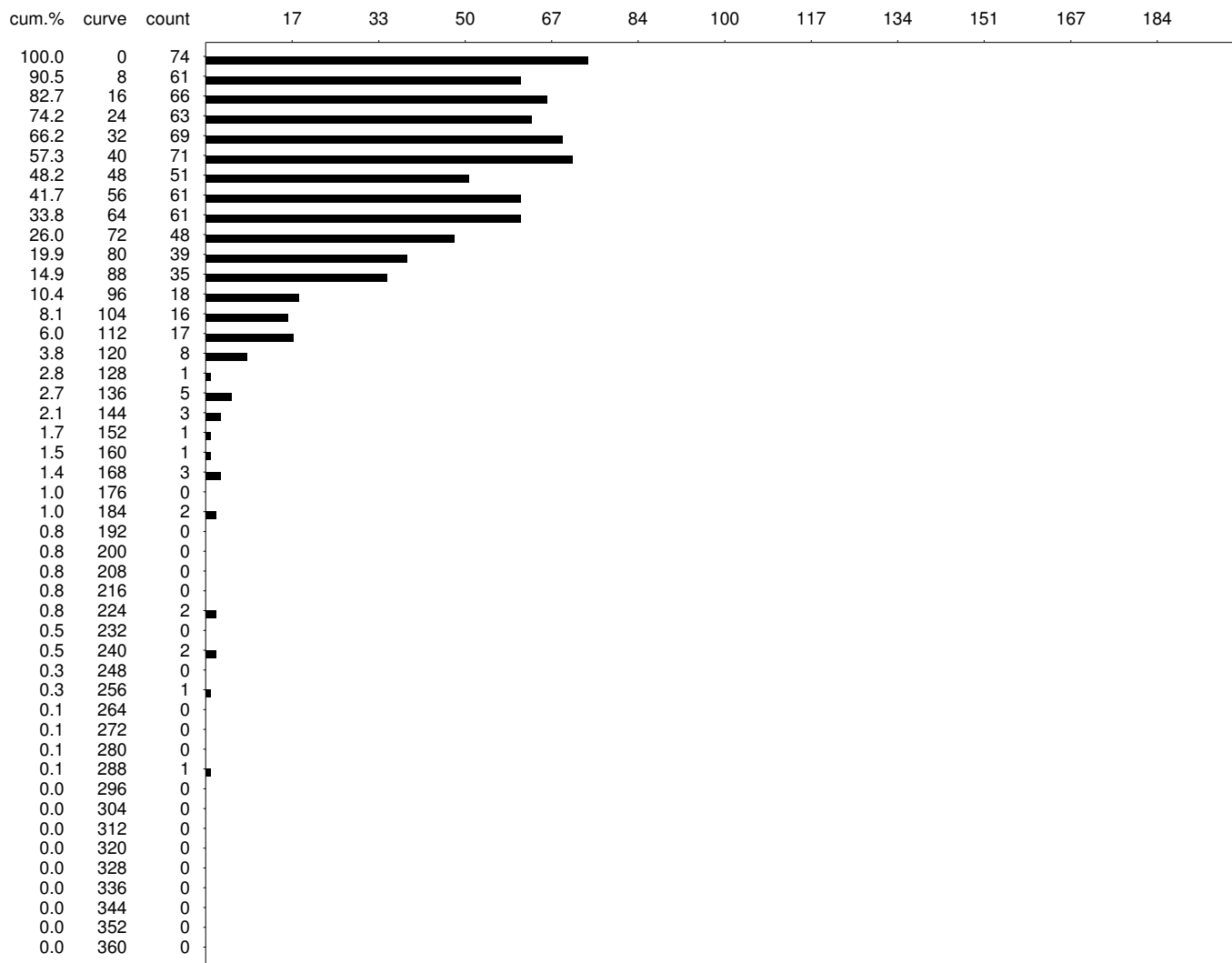


Cas-Cad-Nac Farm, LLC : Curve Histogram

Date : 29Feb24
 Sample ID : CCNF Alarra
 Description : [[ff[bH][LB][a8][d2/29/24]AOA#36238286
 Lot/Client : Cas-Cad-Nac Farm, LLC
 Operator : JCL

Diam = 18.7[4.2] um
 Curve = 51.9[38.6] deg/mm
 Sample size = 2273
 Curve size = 780

OFDA2186:5.370 Cal: D = 4.9495*WH -2.19
 Filename: 2024 CCNF midside



Cas-Cad-Nac Farm, LLC : Staple Graph

Date : 29Feb24
Sample ID : CCNF Alarra
Description : [i][ff[bH][LB][a8][d2/29/24]AOA#36238286
Lot/Client : Cas-Cad-Nac Farm, LLC
Operator : JCL

Diam = 18.7[4.2] um
Min Diam = 15.5 um
Max Diam = 20.9 um
SD Along = 1.6 um
Length (mm) = 65.0 mm
Break Point = 0.0 mm

OFDA2186:5.370 Cal: D = 4.9495*WH -2.19
Filename: 2024 CCNF midside

