



Cas-Cad-Nac Farm, LLC
490 Wheeler Camp Rd
Perkinsville VT 05151
802-263-5740

Customer
Cas-Cad-Nac Farm, LLC
490 Wheeler Camp Rd
Perkinsville VT 05151
802-263-5740

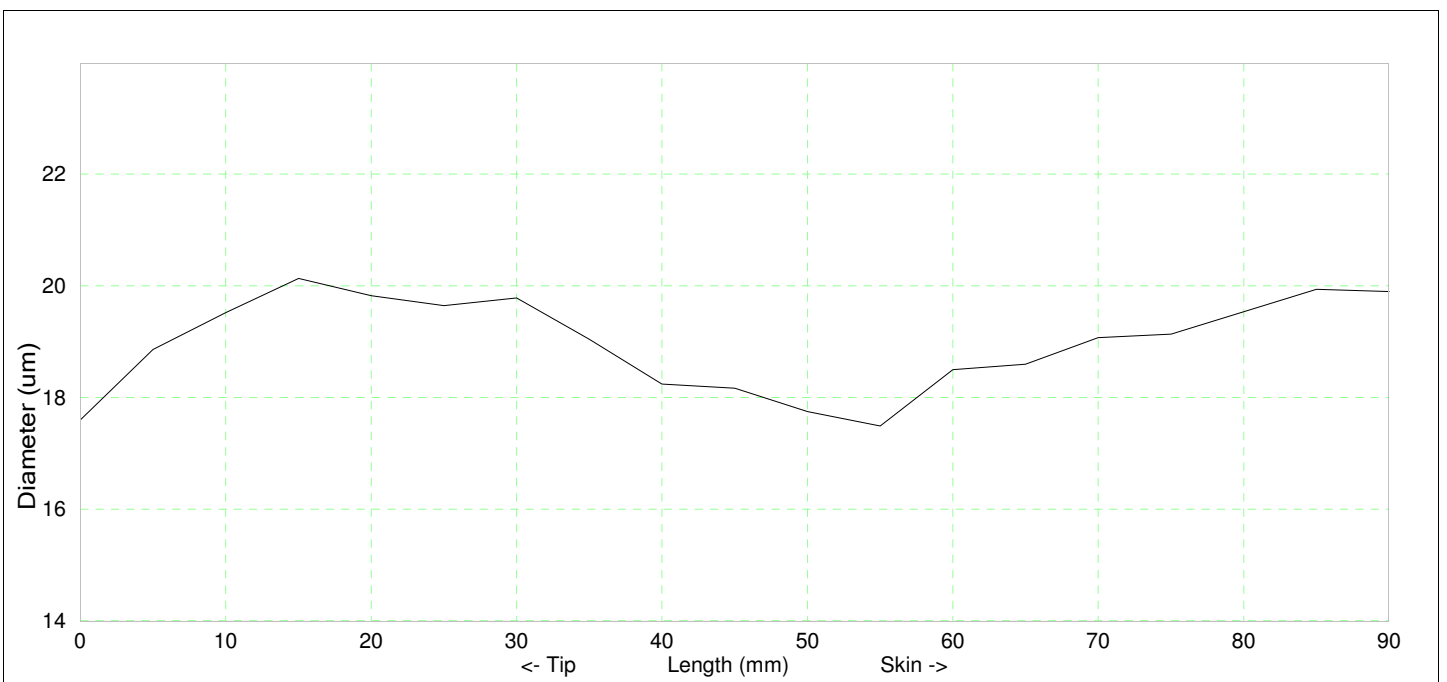
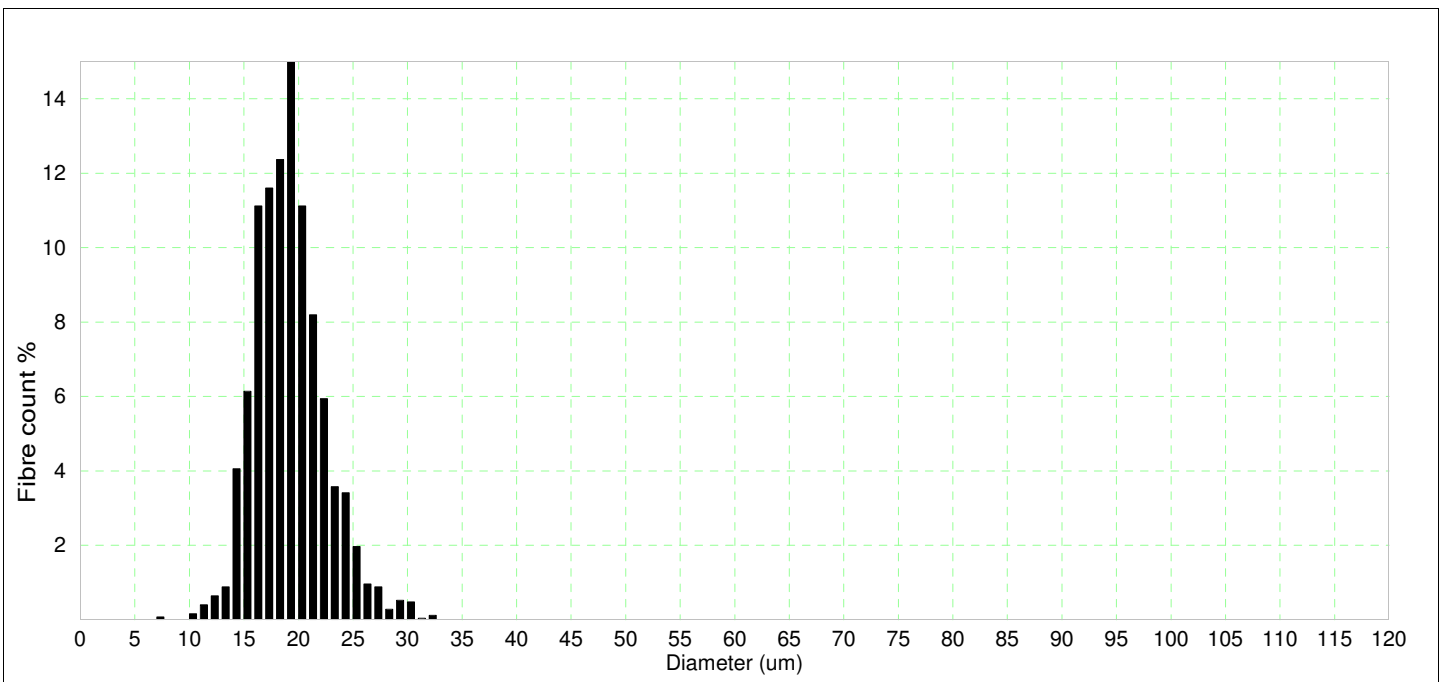
OFDA Test Report

OFDA2186 v5.370 (Cal:4.9495W-2.19), Measured: 19May23, File: CCNF 2023 midside

Name : CCNF Lunar Reign
Description : ARI#36130245
Operator : JCL
Lot/client : Cas-Cad-Nac Farm, LLC
Breed : Huacaya
Sex : f
Colour : DF
Date sampled : 4/16/23
Location : midside
Age (months) : 21

Diameter : 18.9 μ m
SD : 3.2 μ m
CV : 17.1 %
CE : 6.3 μ m
Comfort : 99.8 %
%<15 μ m : 6.2 %
Spin fineness : 17.8 μ m
Curve : 48.3 deg/mm
Curve SD : 34.3 deg/mm
Num fibres : 2490

Staple length : 95.0 mm
Finest from tip : 55.0 mm
Mean diam ends : 18.7 μ m
Skin diam : 19.9 μ m
Min diam : 17.5 μ m
Max diam : 20.1 μ m
SD Along : 0.9 μ m
SD Across : 3.8 μ m

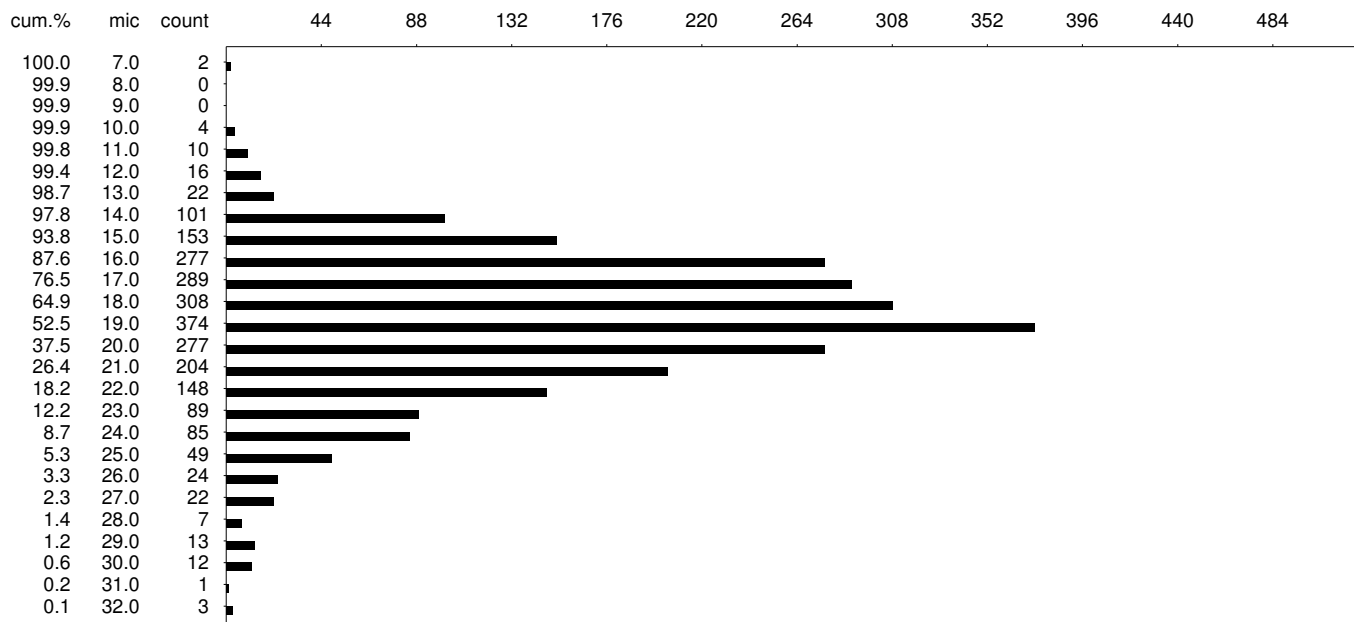


CCNF Lunar Reign : Diameter Histogram

Date : 19May23
 Sample ID : CCNF Lunar Reign
 Description : [[ff[bHuacaya][cDF][a21[d4/16/23]ARI#36130245
 Lot/Client : Cas-Cad-Nac Farm, LLC
 Operator : JCL

Diam = 18.9[3.2] um
 CV = 17.1 %
 CEM = 6.3 um
 CF = 99.8 %
 Spin fineness = 17.81
 Sample size = 2490
 Curve = 48.3[34.3] deg/mm

OFDA2186:5.370 Cal: D = 4.9495*WH -2.19
 Filename: CCNF 2023 midside

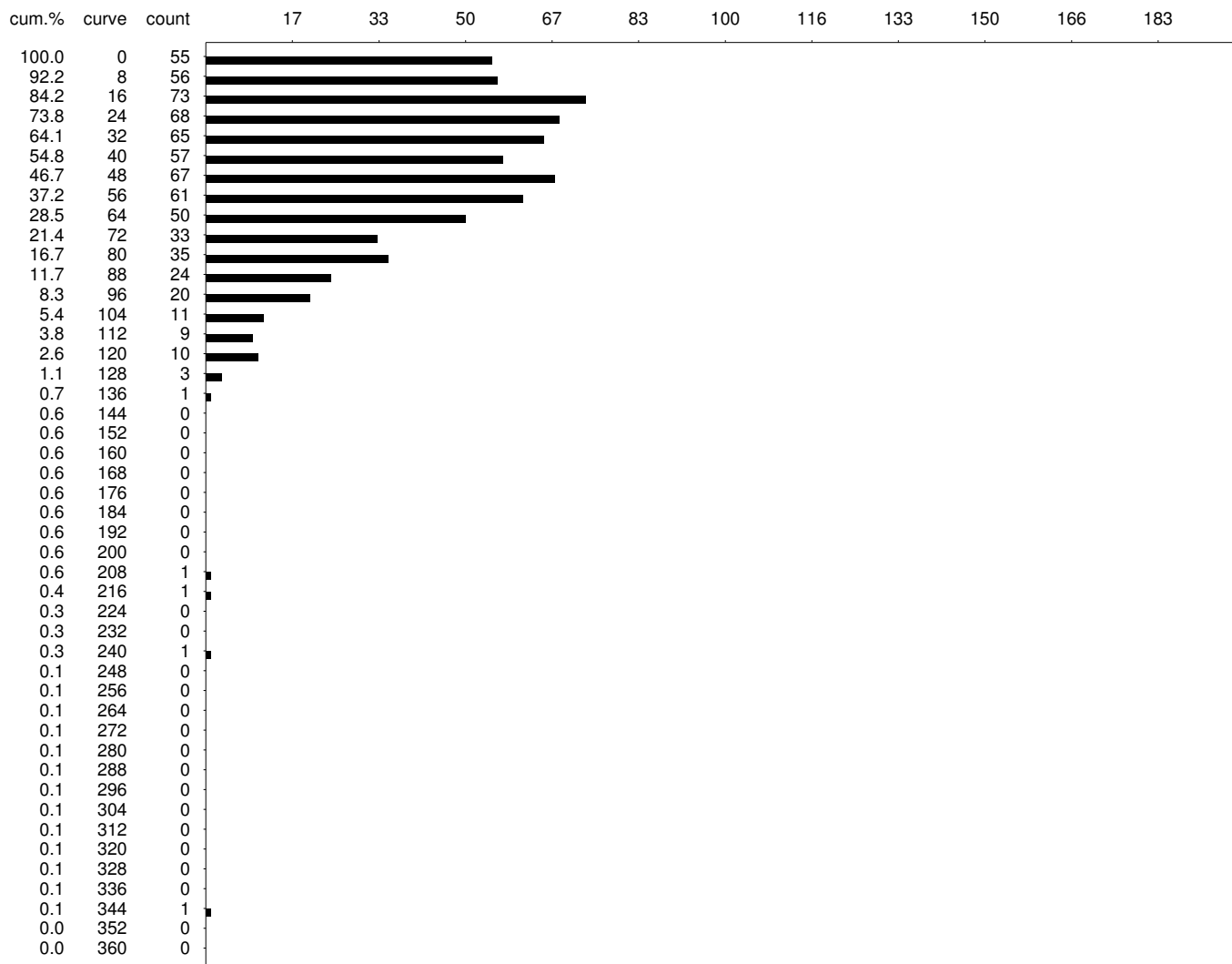


CCNF Lunar Reign : Curve Histogram

Date : 19May23
 Sample ID : CCNF Lunar Reign
 Description : [i][f][b]Huacaya[cDF][a21[d4/16/23]ARI#36130245
 Lot/Client : Cas-Cad-Nac Farm, LLC
 Operator : JCL

Diam = 18.9[3.2] um
 Curve = 48.3[34.3] deg/mm
 Sample size = 2490
 Curve size = 702

OFDA2186:5.370 Cal: D = 4.9495*WH -2.19
 Filename: CCNF 2023 midside



CCNF Lunar Reign : Staple Graph

Date : 19May23
Sample ID : CCNF Lunar Reign
Description : [i][b]Huacaya][cDF][a21[d4/16/23]ARI#36130245
Lot/Client : Cas-Cad-Nac Farm, LLC
Operator : JCL

Diam = 18.9[3.2] um
Min Diam = 17.5 um
Max Diam = 20.1 um
SD Along = 0.9 um
Length (mm) = 95.0 mm
Break Point = 55.0 mm

OFDA2186:5.370 Cal: D = 4.9495*WH -2.19
Filename: CCNF 2023 midside

